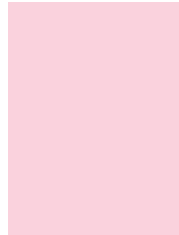
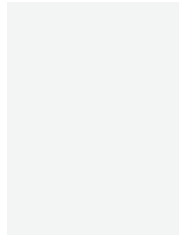


Shapelle™
www.shapelle.co.uk

Easy Toning and Shaping...
...to create a Healthy Lifestyle...



www.shapelle.co.uk

Enjoy life...

Shapelle™
www.shapelle.co.uk

Stay fit

Stay healthy





We want you to look sexy,
feel good and keep active!

Shapelle™ is a professional brand that specialises solely with high quality products that benefit women's health, posture and general body. We believe that the clothing we wear can help us become fitter, feel good and be more active though out the day. Just as our skin helps our body regulate multiple things for our body, we collate and provide access to clothing products that are high quality, are stylish and have a function to help reduce fat, increase blood flow throughout the body and generally help women feel good and more active.

With this goal in mind we believe we have collected products that help women with their everyday lives, this has already been proven by many scientific studies and surveys made within many countries with different types of women, even we within the company use our products on a daily basis to help us with our everyday tasks... and we know they work!

CONTENTS

TONERS

- 4 - WaistToner™
- 5 - BodyToner™
- 6 - DressToner™
- 7 - Toner benefits

SHAPERS

- 8 - WaistToner™
- 9 - BodyToner™
- 10 - DressToner™
- 11 - Shaper benefits

COMFORT BRAS

- 12 - AddMeSilicon™
- 13 - Easy PushUp Bra™
- 14 - FeelGood Bra™
- 15 - Hybrid Bra™
- 16 - SportsActive Bra™
- 17 - SummerUp Bra™
- 18 - Comfort bra benefits

- 19 - SIZE GUIDE



WaistToner™

TONER PRODUCTS

Get 360 degrees of fantastic shaping with the WaistToner. A deep cut-out in front lets you wear your own bra for maximum fit and freedom of movement. This firm stretch body brief features slimming panels that compress bulges and cinch your waist for a smooth shapely look under clothes. Silicone grips at the hem help the torsette stay in place, while the satiny fabric finish lets your clothes glide smoothly over the shaper.

The WaistToner immediately gives you a slimmer-looking body the moment you put it on, but doesn't stop there; look good in anything you wear as you hide all those flabs, while also losing them in the process, a fuller chest appearance when worn underneath your clothes as this helps in pushing up the bust area while also supporting and firming up waist and body area.



Shapelle™

For the latest prices, sizes and available colours visit:

www.shapelle.co.uk

ORDER DIRECTLY ONLINE

FREE DELIVERY ACROSS UK

FEATURES

- ✓ Sleeveless
- ✓ Cushioned straps
- ✓ Cut out front
- ✓ Shaping for waist, tummy
- ✓ Silicone grip hem
- ✓ Fabric: Nylon/elastane
- ✓ Care: Hand wash

SIZES

S M L

COLOURS

Skin

Black



BodyToner™

TONER PRODUCTS

The BodyToner is an innovative and comfortable slimming garment that helps smooth out unsightly bumps, slim the appearance of midsections, push up the bust area, and create sexy, shapely silhouettes.

The upper part of the BodyToner is made of thin material with a push-up and shape-up effect. The waist area is made layered material that firms and tightens up the tummy.

The central tightening concave-convex knitting technique on the body massages the cellulite on the abdomen, burns fat and shapes up the body line giving you 360° of slimming technology that helps smooth rolls & bulges and eliminate layers.



Shapelle™

For the latest prices, sizes and available colours visit:
www.shapelle.co.uk

ORDER DIRECTLY ONLINE

FREE DELIVERY ACROSS UK

FEATURES

- ✓ Able to push up bust area
- ✓ Supports & firms up waist
- ✓ Slimming down anytime
- ✓ All day firm body bust
- ✓ Seamless design
- ✓ Flattens and slenderizes
- ✓ Supports and enhances

SIZES

S M L

COLOURS

Skin

Black

DressToner™

TONER PRODUCTS

Made of NEW free-breathing easy-to-wear micro-fiberic, the DressToner is the perfect cotton gusset that keeps you dry and comfortable, feels like you are wearing a sexy panty to help look smarter, slimmer and make those dresses fit better and look better.

Moderate control with detachable spaghetti shoulder straps, Target tummy, hips and midriff, Lift the buttocks and chests, flatten the tummy, waist and back, slim the thighs
Soft cups and center ruching for bust shaping, It can be wore with or without bra
The all day comfort is achieved with Nylon and Spandex fabric, Seamless sides provide a smooth look under any clothes.



Shapelle™

For the latest prices, sizes and available colours visit:

www.shapelle.co.uk

ORDER DIRECTLY ONLINE

FREE DELIVERY ACROSS UK

FEATURES

- ✓ Material 100% Cotton
- ✓ Package 1
- ✓ Sizes S/M/L
- ✓ Washing: Machine washable with laundry net

SIZES

S M L

COLOURS

Skin

Black

TONER BENEFITS



SMOOTH ROLLS AND LOVE HANDLES

By placing pressure on the mid-section the rolls and sags of fat that hang become invisible once smoothed, this effect is straightaway useful as you look better in most of your clothing now, however the long term usage results are also excellent as fat loss and shaping occurs with permanent results over proper usage.



MASSAGE ABDOMINAL MUSCLES

Many of our shaping and toning products provide mid-section support, this support goes one step further as your muscles under the body are also toned and shaped by adding pressure to the right area within the mid-section you don't only get slimmer, but also a stronger mid-section over time.



BACK SUPPORT

Less back strain, less weight on the spine leads to more freedom throughout the day. Many of our toners and shapers come with back support as standard, by gently affirming the whole mid-section of the body amazing comfort is achieved.



WaistShaper™

SHAPER PRODUCTS

FINALLY Wear What You Want - When You Want! WaistShaper lets you wear your favourite tight jeans, figure hugging leggings and pencil-thin dresses with no bumps, lumps or ugly panty lines! No one will know your secret while you enjoy a sleek, new, slimmer you!

- 1) It is a revolutionary slimming and lifting undergarment
- 2) Comfortable wearing firm control with no show through panty lines
- 3) Can give you a sexy, curvy hour glass figure instantly
- 4) Slim and lift makes you look inches smaller and pounds thinner instantly
- 5) It hides bulges, bumps and rolls making you look tight and trim
- 6) Fit into your favourite pair of jeans, slinky dress or tailored business suits comfortably



Shapelle™

For the latest prices, sizes and available colours visit:

www.shapelle.co.uk

ORDER DIRECTLY ONLINE

FREE DELIVERY ACROSS UK

FEATURES

- ✓ Flatten Tummy
- ✓ Slim Thighs
- ✓ Firm and Lift Butt
- ✓ So Comfortable You'll Never Know You're Wearing It!
- ✓ Clothes Fit Better and Look Better

SIZES

S M L

COLOURS

Skin

Black



BodyShaper™

SHAPER PRODUCTS

The BodyShaper is designed based on ergonomic principles, in order to protect and adjust the figure, to fix concentration of fat, and righting the spine, correct posture.

Women's gold point at the ratio of the growth direction and the body fat chest, waist, abdomen, buttocks, legs, you can place pressure on the vertical, horizontal, diagonal cutting three-dimensional integrated way, to give "measurements" fat a moderate uplift forces, tension and pressure in maintaining the function of regulating body temperature, while maintaining the right after the shift of fat to guide the flow, after a long period of wear (8 hours a day), a few months to achieve optimal positioning.



Shapelle™

For the latest prices, sizes and available colours visit:
www.shapelle.co.uk

ORDER DIRECTLY ONLINE

FREE DELIVERY ACROSS UK

FEATURES

- ✓ Hides bulges, bumps and rolls making you look tight and trim.
- ✓ Helps you fit into jeans, slinky dress or tailored business suits comfortably
- ✓ Tighten the chest + more...

SIZES

S M L

COLOURS

Skin

Black



DressShaper™

SHAPER PRODUCTS

Breakthrough design, wearing a more convenient and comfortable, breast lifting with superior body sculpting features, together with the abdomen, to gain a sexy curve.

Perfect slim body & sexy & body shaping while you wear any inner clothes, or just as a solo piece.

- ✓ Shape your body
- ✓ Relax muscles
- ✓ Relieve fatigue
- ✓ Regulate blood circulation



Shapelle™

For the latest prices, sizes and available colours visit:

www.shapelle.co.uk

ORDER DIRECTLY ONLINE

FREE DELIVERY ACROSS UK

FEATURES

- ✓ Material 90% Nylon + 10% Spandex
- ✓ Package 1
- ✓ Sizes S/M/L
- ✓ Washing Hand wash

SIZES

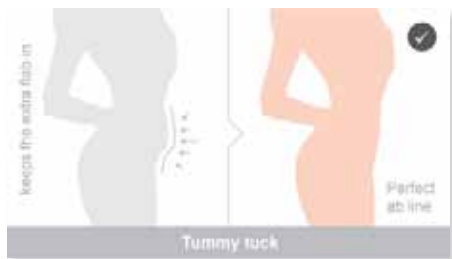
S M L

COLOURS

Skin

Black

SHAPER BENEFITS



TUMMY TUCK

One of the most difficult areas to remove fat from as the body just loves to accumulate even an extra biscuit intake straight to the stomach area... our toners and shapers help keep the stomach in and over time you will notice the fat has just disappeared like magic... give it a go and find out for yourself.



SHAPE & TONE HIPS

It's not easy to get the perfect hip shape quickly, so we have added shaping features within our toners and shapers to support areas that need support, tone areas that need toning and more... the toners and shapers act as a shaping glove that slowly but surely helps the body mature into the perfect shape...



TONE THIGHS

Sexy thighs require a lot of hard work in the gym, also our toner and shaper products... which can help your workout gain 100% more results over time to gain the sexy legs you have always dreamed of, that much faster, that much easier and that much sexier!



AddMe Silicon™

COMFORT BRAS

The AddMe Silicon is an invisible bra that can be attached directly to your skin for invisible support without binding straps or back closures with a truly natural feeling .It is easy to apply and remove ,and can be washed and reused up to even 100 times.

- * strapless and backless
- * self-adhesive and washable
- * suitable for different kind of dress



Shapelle™

For the latest prices, sizes and available colours visit:
www.shapelle.co.uk

ORDER DIRECTLY ONLINE

FREE DELIVERY ACROSS UK

FEATURES

- ✓ Breast augmentation – creates more cleavage and fuller looking breasts
- ✓ Moulding
- ✓ Back is slightly concave for comfortable fit
- ✓ Swimwear friendly

SIZES

S M L

COLOURS

Skin

Black



Easy PushUp Bra™

COMFORT BRAS

The Easy PushUp Bra has become popular and well-known because of the lift they give to the breasts while making them look rounder and firmer. The Easy PushUp Bra helps enhance the appearance of cleavage and make breasts appear larger. It is a great alternative to getting surgery or medical treatment for essentially the same effects.

- 53% Off Bustline Shaper and Bust Support.
- Lifts and supports for a curvier and sexier bustline.
- Easy to wear, just slip it on!
- Wide shoulder straps - comfortable, eases pressure on shoulders and won't slip.
- High sides and back for better coverage and optimum support.



Shapelle™

For the latest prices, sizes and available colours visit:

www.shapelle.co.uk

ORDER DIRECTLY ONLINE

FREE DELIVERY ACROSS UK

FEATURES

- ✓ Material 83% Nylon + 17% Spandex
- ✓ Package 1
- ✓ Sizes S/M/L
- ✓ Washing Hand wash

SIZES

S M L

COLOURS

Skin

Black



FeelGood Bra™

COMFORT BRAS

The FeelGood Bra is available in three colors – black, white and nude. It gives you a better shape and curves perfectly with any outfit. Let the beat appears nailed on you and feel the vibrant confidence and elegance to your personality.

Well chances are that you will probably leave on your bust bounces excitement about this revolutionary bra. As it gives you as a sports bra to support and your heart as the bra has fewer discussions! With lightweight and feels soft and silky, you can go to bed with the FeelGood Bra topping off your curves.

No peeping Straps, No complicated bulges, No rolling or riding up, Machine washable, Different to fit cup sizes you fine, Striking Value



Shapelle™

For the latest prices, sizes and available colours visit:
www.shapelle.co.uk

ORDER DIRECTLY ONLINE

FREE DELIVERY ACROSS UK

FEATURES

- ✓ Smooth
- ✓ Lift Defined
- ✓ Discreet style
- ✓ Comfortable fit
- ✓ Perfectly support
- ✓ Maintains its shape

SIZES

S M L

COLOURS

Multi

-



Hybrid Bra™

COMFORT BRAS

The Hybrid Bra range was designed because many women have trouble finding their perfect fitting sizes which feel good with all the different bra labels that are out there.

So we wanted to make a bra that fits, and is very comfortable for all sizes and shapes.

The great thing about the Hybrid Bra range is that it is "wireless" and seamless. And of course the Hybrid Bra range comes in a variety of colors and styles, which makes it appealing for all types of body shapes.



Shapelle™

For the latest prices, sizes and available colours visit:
www.shapelle.co.uk

ORDER DIRECTLY ONLINE

FREE DELIVERY ACROSS UK

FEATURES

- ✓ Maximum coverage Ideal for under low cut tops, sweaters and dresses.
- ✓ No underwires, hooks, or digging straps.
- ✓ Constructed with our Everlast, comfort stretch fabric.

SIZES

S M L

COLOURS

Skin

Black



SportsActive Bra™

COMFORT BRAS

Although bone and muscles support other parts of the body, the breasts are chiefly composed of fatty tissue and support structures called Cooper's Ligaments, according to LessBounce.com. Because the breasts are not supported by other structures, a sports bra can help to provide support and prevent the breasts from moving, which can cause the tissue to lose elasticity.

Our SportsActive Bra performs a number of functions when a woman is exercising. These include holding the breasts in place and spreading the weight of the breasts more evenly and reducing the amount of strain placed on the back.



Shapelle™

For the latest prices, sizes and available colours visit:

www.shapelle.co.uk

ORDER DIRECTLY ONLINE

FREE DELIVERY ACROSS UK

FEATURES

- ✓ Seamless pullover
- ✓ V-neck, wide shoulder straps
- ✓ Soft, full coverage cups
- ✓ 96% nylon, 4% spandex
- ✓ Sport/yoga/work, etc.

SIZES

S M L

COLOURS

Multi



SummerUp Bra™

COMFORT BRAS

This strapless SummerUp Bra acts like a tube top. It takes out unwanted bulges with its hosiery structure, that gives a snug yet gentle support. It features removable cup inserts and adds contour with its side panels. This is a great buy for wearing underneath t-shirts and delicate fabrics.

Molded cups, completely seam free cups.

Non - binding strapless support, but with reinforced panels.

None straps.

6 inch back band, no metal closures - pullover style.



Shapelle™

For the latest prices, sizes and available colours visit:

www.shapelle.co.uk

ORDER DIRECTLY ONLINE

FREE DELIVERY ACROSS UK

FEATURES

- ✓ Material 96%nylon + 4% spandex
- ✓ Package 3 piece
- ✓ Sizes S/M/L
- ✓ Washing Machine washable

SIZES

S M L

COLOURS

Skin

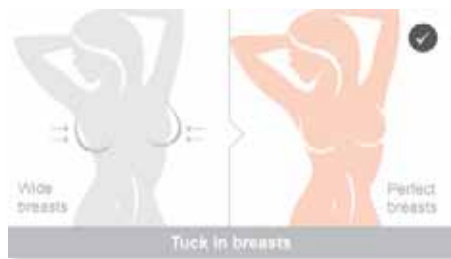
Black

COMFORT BRA BENEFITS



LIFT BREASTS

Every woman wants firm and lifted breasts... it's a fact of life... you may be using hormone enhancers, creams etc etc... however a simple support mechanism in the bras you wear can also make a major effect to not only support the chest area but also lift and firm it over time.



TUCK BREASTS FROM THE SIDE

Wide, hanging or sagging breasts are a problem of the past, with our super wicked bras... as they provide comfort, anti-sagging and anti-hanging technology which keeps the breasts in the right place and shape to look sexy all day every day!



BREAST SUPPORT

Women wear bras to stop the breast area from sagging and feeling uncomfortable... we know this, and so have created products that not only lend to these support features, but provide super support at just the right areas to be the most comfortable bras

SIZE GUIDE



TONER AND SHAPER SIZE GUIDE

When purchasing shapewear, use your dress size as a guide.

Product size	Small	Medium	Large
Dress size	6 - 10	12 - 14	16 - 20
Waist	27" - 29"	30" - 33"	34" - 37"
Hip	37" - 40"	41" - 43"	44" - 48"



BRA SIZE GUIDE

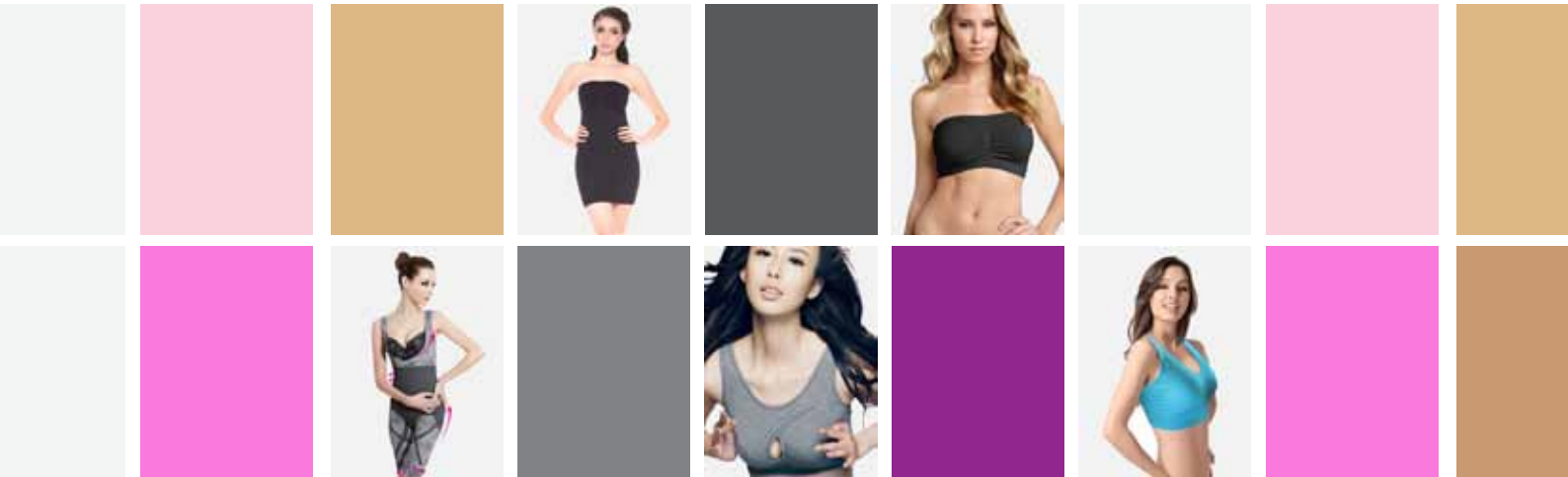
Use the following table to find the product size you should choose when purchasing any of our Bra products,

Product size	Small	Medium	Large
Shirt size	6 - 8	10 - 12	14 - 18
Bust	32 - 35	36 - 38	39 - 44

How to calculate your perfect bra size? visit www.shapelle.co.uk for full details.

Shapelle™
www.shapelle.co.uk

Easy *Toning and Shaping...*
...to create a *Healthy Lifestyle...*



www.shapelle.co.uk